

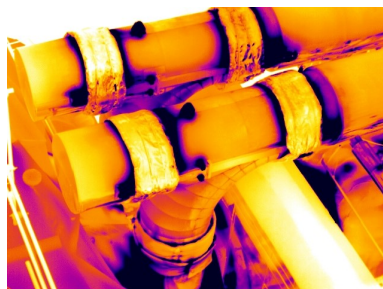
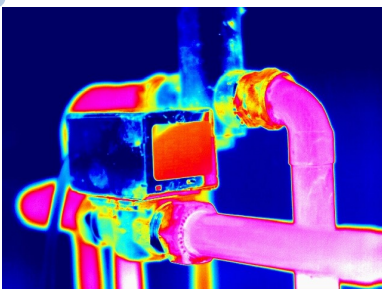
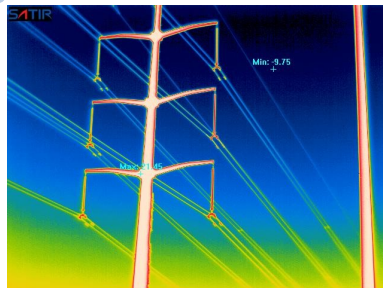
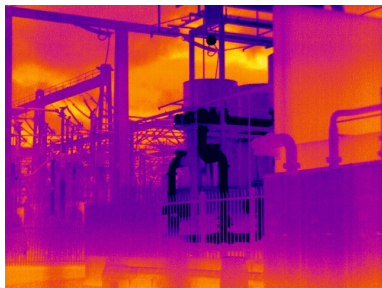
SATIR D600

High Performance IR Camera with Laser Pointer

SATIR D600 is our newest addition to the D Series, it is a High Performance Handheld IR Camera which delivers high quality Images and Thermal Videos with it's 640x480 IR Detector.

The D600 has a range of imaging modes which includes Duo-Vision Plus which is SATIR latest innovative imaging technology. Duo Vision merges a infrared and visual image to deliver a highly detailed image to the user for analysis when carrying out a thermal survey.

The D600 comes with a touch screen that will auto focus to ensure the user has a clearly focused thermal image. This means when generating a report the image is already focused which enables accurate evaluation.



Features

- Newly Designed Platform
- IR/CCD/Duo Vision Plus
- Laser Pointer
- Built-in Memory
- Adaptable LCD Display
- Easy to use interface
- 5 MP High Definition Camera
- Thermal Video Recording

Marley's Lane, Drogheda, Co. Louth, Ireland

Tel: + 353 (41) 9846786

Email: enquiry@satir.com

Website: www.satir.com

Camera Name	D600
D600 Specification	
Detector Resolution	640x480
Thermal Sensitivity (N.E.T.D)	≤0.06°C@30°C
FOV/Min. Focus Distance	24°x18°/0.20m
Spectral Range	8-14um
Spatial Resolution	0.65 mrad
Focus Mechanism	Manual/Motorised/Auto
Measurement	
Temperature Range	-20°C ~ + 600°C, up to +1500°C (Optional)
Accuracy	±2°C or ± 2% of readings
Measurement Mode	8 Movable Spots, Auto Hot/Cold Spot,profile, 2 area boxes, isotherm, line
Alarm	Yes
Image Presentation	
Image Mode	IR/CCD/Duo-Vision/Duo Vision Plus
Visible Pixels	High Definition CCD, 5 million pixels
LCD Display	3.5" Capacitive Touch Screen
Image Output Mode	NTSC (60Hz) or PAL (50Hz) Composite Video
File Format (Thermal/Visual)	JPEG (Thermal/Visual)
Power System	
Battery Type	Built-in Rechargeable Lithium-ion Battery
Charge Interface	Type-C
Power Manage	Auto Shut Off/Sleep Mode
Environmental	
Encapsulation	IP54
Physical Characteristics	
Tripod Mounting	1/4" _20

Please be aware specifications can vary from time to time

Marley's Lane, Drogheda, Co. Louth, Ireland

Tel: + 353 (41) 9846786

Email: enquiry@satir.com

Website: www.satir.com